

GENERAL DESCRIPTION:

It's the smallest AMR meter in the world with multifunction. It is popular in West European as its standard installation and DIN EN 50022, small size, RS485 as well as multi-tariff. It's your best choice to install at home calculation.



METER PARAMETER:

- Voltage: 220/230V +/-20%
- Current: 5(45) A, 5(50) A, 5(80) A, 10(100) A
- Accuracy class: 1.0
- Standard: IEC62052-11, IEC62053-21
- Frequency: 50-60Hz
- Impulse constant: 1000imp/kWh
- Display mode: LCD 5+1 = 99999.9kWh
- Power consumption: ≤8VA ≤0.4Wh
- Starting current: 0.004Ib
- Temperature range: -20~65°C
- Flashing red: Impulse indication, width=90ms
- Average humidity: 75%
- value of year:
 - Maximal value: 95%

- Through RS485, read and write meter data as well as setup meter data (has strict secrecy protocol).

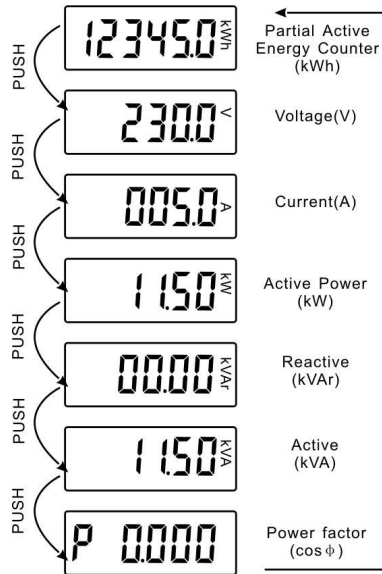
Below Parameters can be read:

Instantaneous parameters, energy, etc.

The meter can read these data during the definite time period and analyse the quality and load condition of user's grid.

- DIN RAIL standard installation size; with only 19.5mm wide, the meter can up to 100A
- Meter has multi-tariff function(optional). The user can set time period through RS485 communication, then the meter will measure the energy of each different time period.
- Meter has battery and RTC with high precision, which is used to support multi-tariff function. And the precision of RTC is better than 0.5s/day.
- Accurately measure forward and reverse energy.
- Display current and voltage (optional).
- Display when power off, display with backlight (optional).
- The data can be displayed through 2 methods:
 - a. Display data automatically by page and the time interval is 5s.
 - b. Check data through the external button.
- Reactive energy can be measured (optional).
- Communication Protocol: IEC1107 or Modbus-RTU Mode.
- Material of Meter housing: ABS fire resistant.
- Degree of Protection: IP51 (indoor meter).
- LCD display(5+1): after power on, the meter will display below information automatically.

LCD DISPLAY :

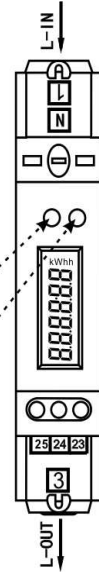


CONNECTION DIAGRAM:

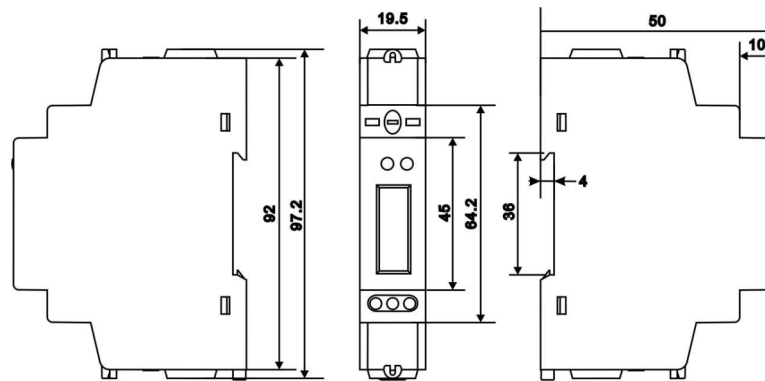
TERMINAL	DESCRIPTION
1	Line-IN
3	Line-OUT
23	A(RS485)
24	G(Earth)
25	B(RS485)

PRESS PAGE

IMPULSE INDICATION



OUT DIAGRAM :



General warnings:

- After removing the packaging make sure the integrity of the unit. If in doubt don't use the equipment and contact technical staff.
- Mounting of electric appliances must be carried out only by skilled electricians. It is imperative to observe the generally applicable safety measures.
- In case of failure and /or malfunctioning of the device, turn off it. For any repair onl contact technical staff. Failure to compnay with the above may compromise the device safety.

Company information:

ORNO-LOGISTIC Sp. z o.o.
ul. Katowicka 134, 43-190 Mikołów